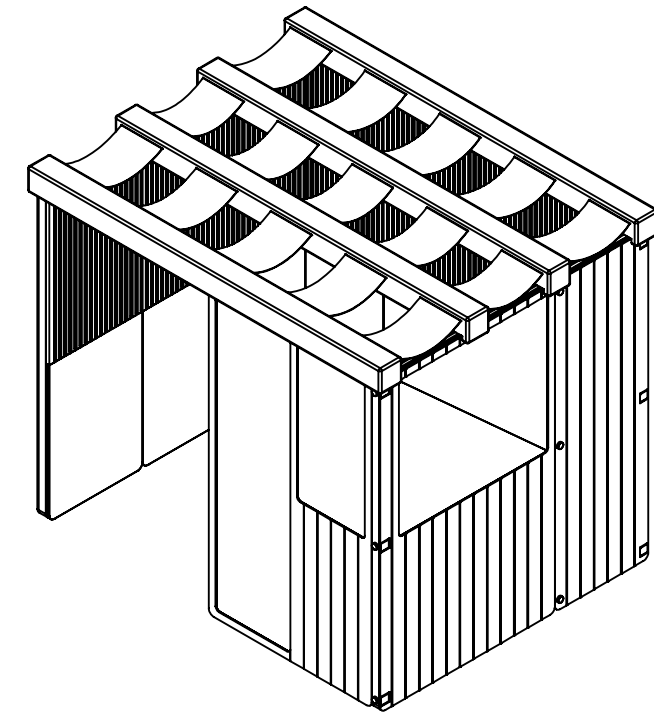


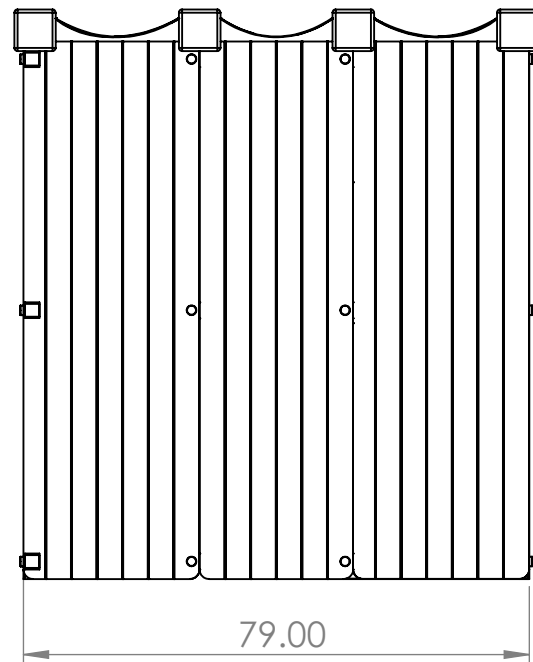
| | | | |
|------------------------|----------------|---|----------|
| TITLE: AMALIA | | TOLERANCES: DECIMAL ±0.25 ANGLE ±0.2° | |
| DRAWN: ERIKA MACGREGOR | | | |
| CLIENT: TIM HAATS | | MATERIAL: VARIOUS | |
| UNITS: IPS | DATE: 04/27/23 | SHEET 1 OF 21 | 1 |
| DWG. #: ASSEMBLY 1 | SCALE: 1:30 | B 11x17 | |



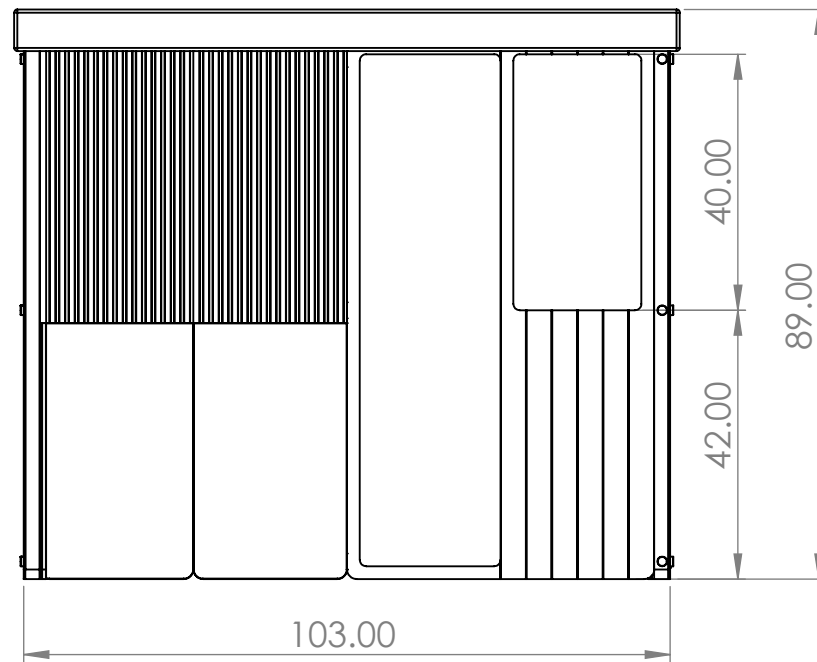
TOP VIEW



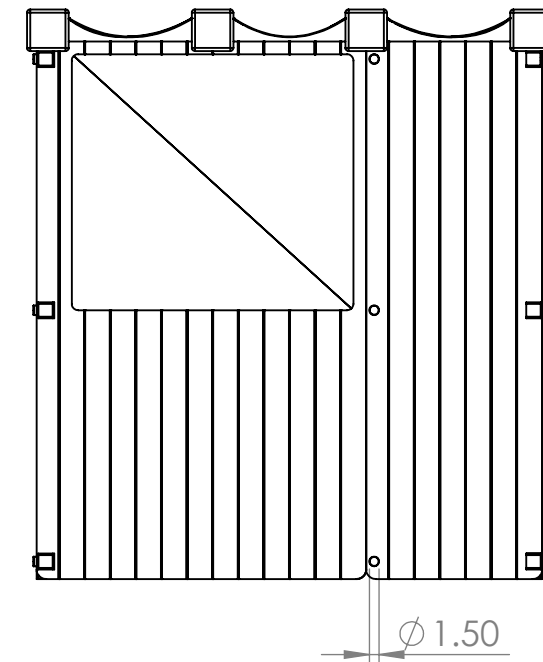
ISOMETRIC VIEW 1:50



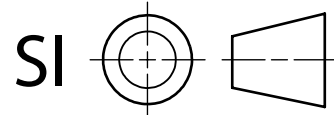
RIGHT SIDE VIEW

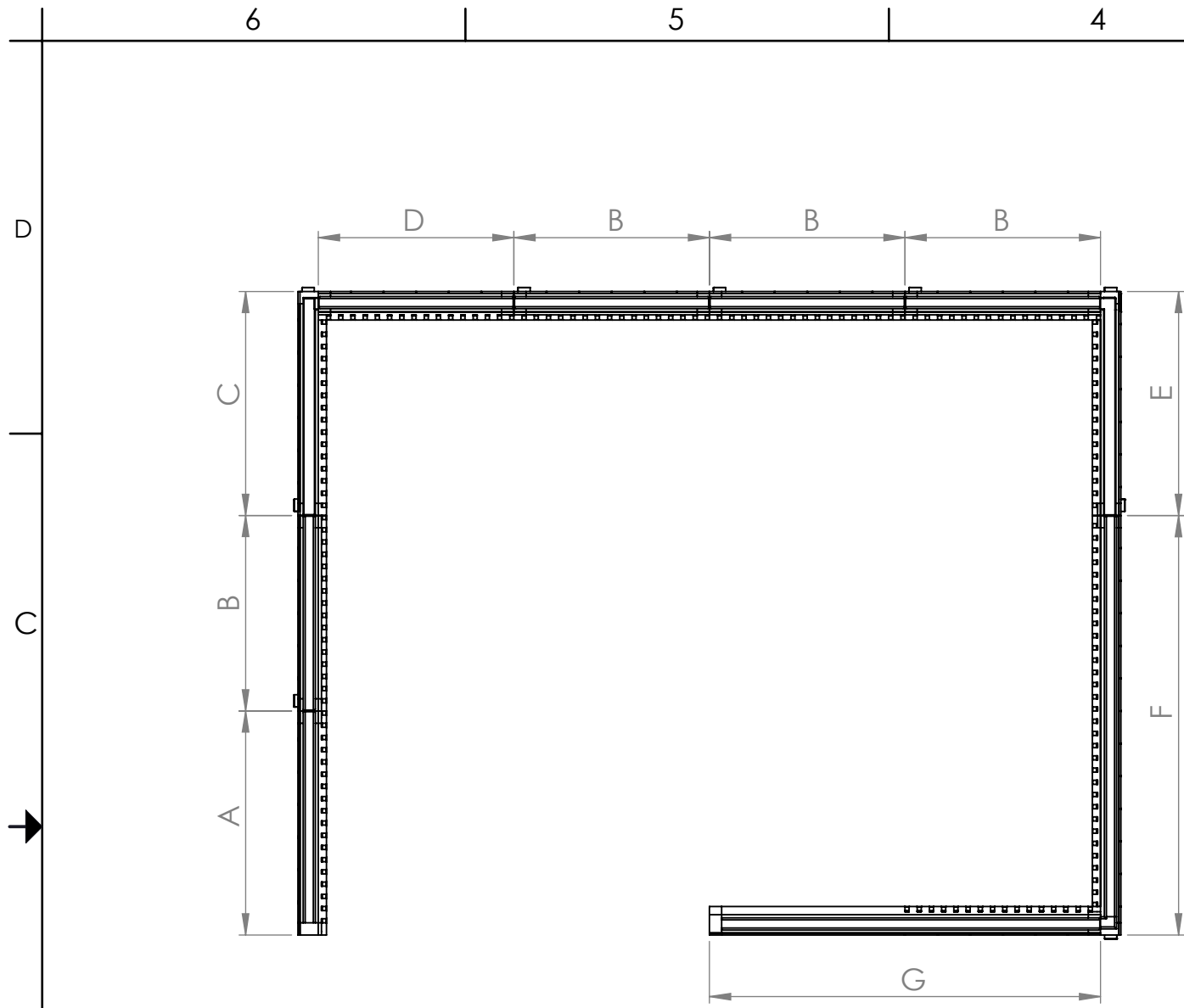


FRONT VIEW

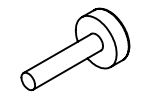


LEFT SIDE VIEW

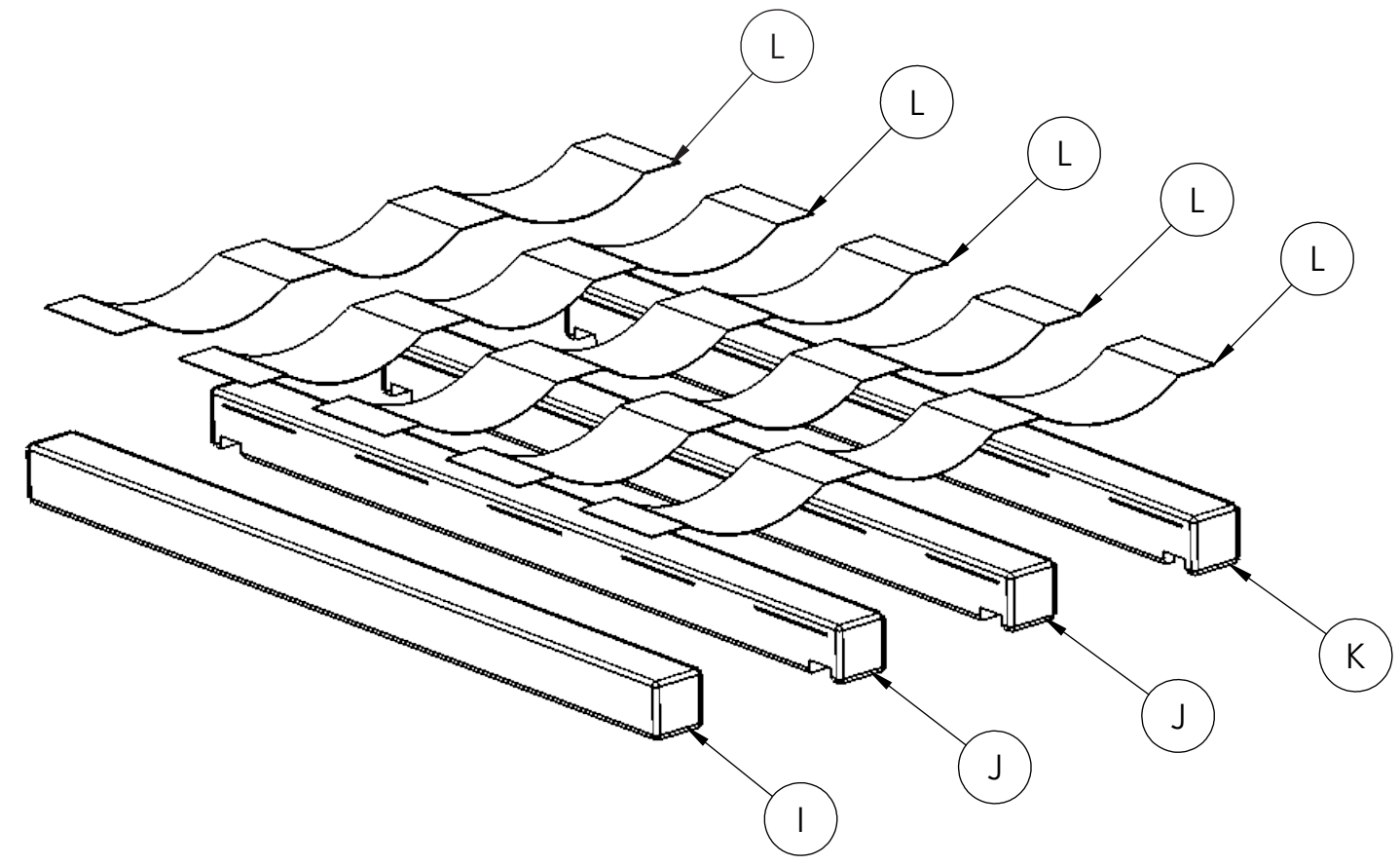




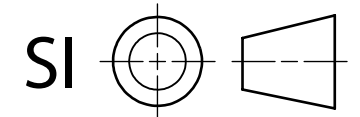
ALCOVE PANELS
TOP VIEW



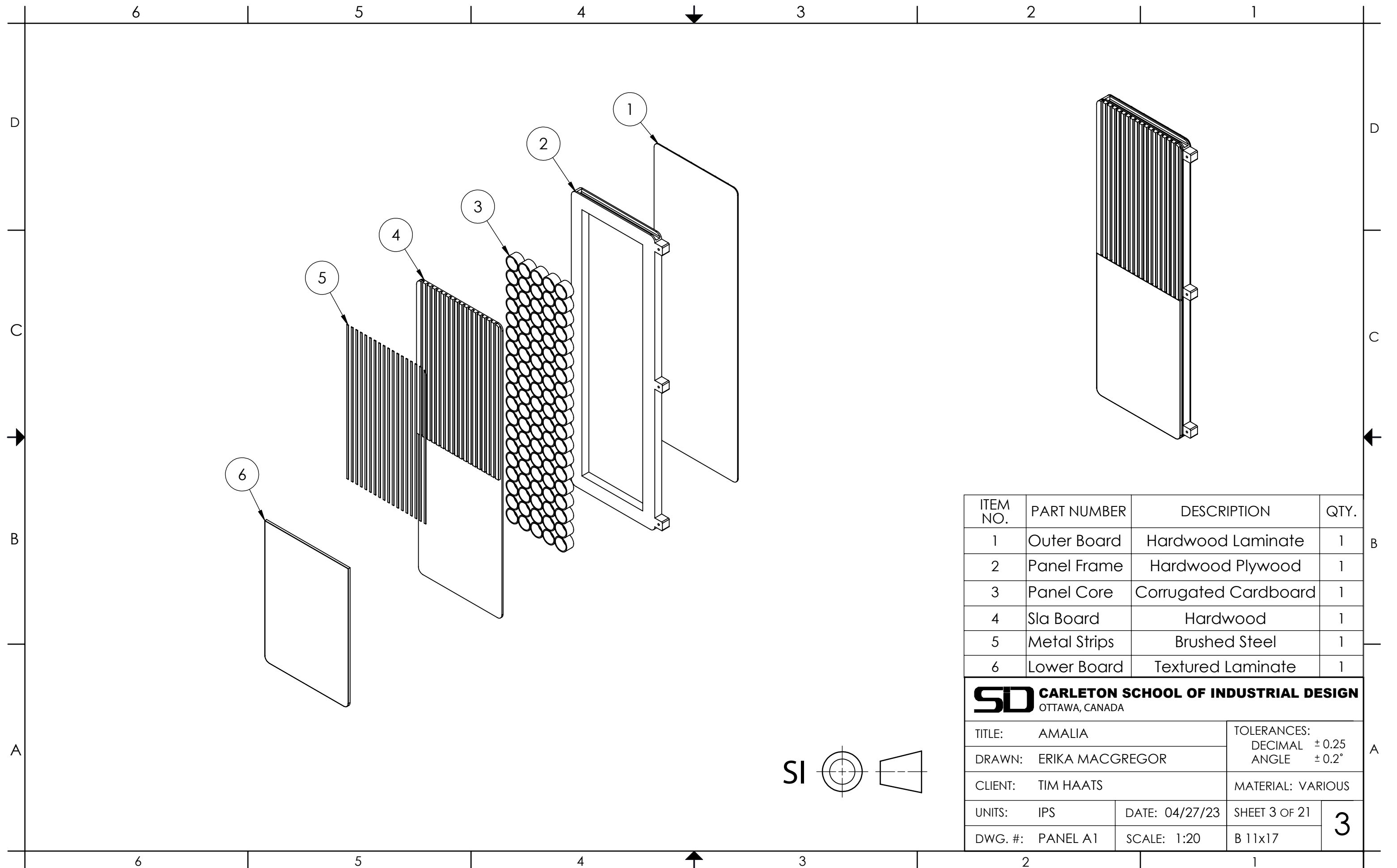
PART H
FASTNER
X27
1:5



ALCOVE ROOF



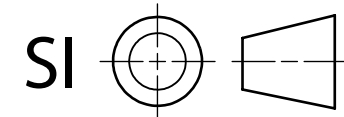
| | | | |
|--|--|---|----------------|
| SD CARLETON SCHOOL OF INDUSTRIAL DESIGN OTTAWA, CANADA | | | |
| TITLE: AMALIA | | TOLERANCES: DECIMAL ±0.25 ANGLE ±0.2° | |
| DRAWN: ERIKA MACGREGOR | | MATERIAL: VARIOUS | |
| CLIENT: TIM HAATS | | UNITS: IPS | DATE: 04/27/23 |
| DWG. #: ASSEMBLY 2 | | SCALE: 1:20 | SHEET 2 OF 21 |
| | | | 2 |

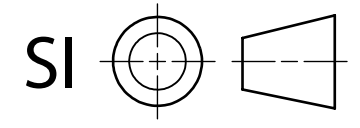
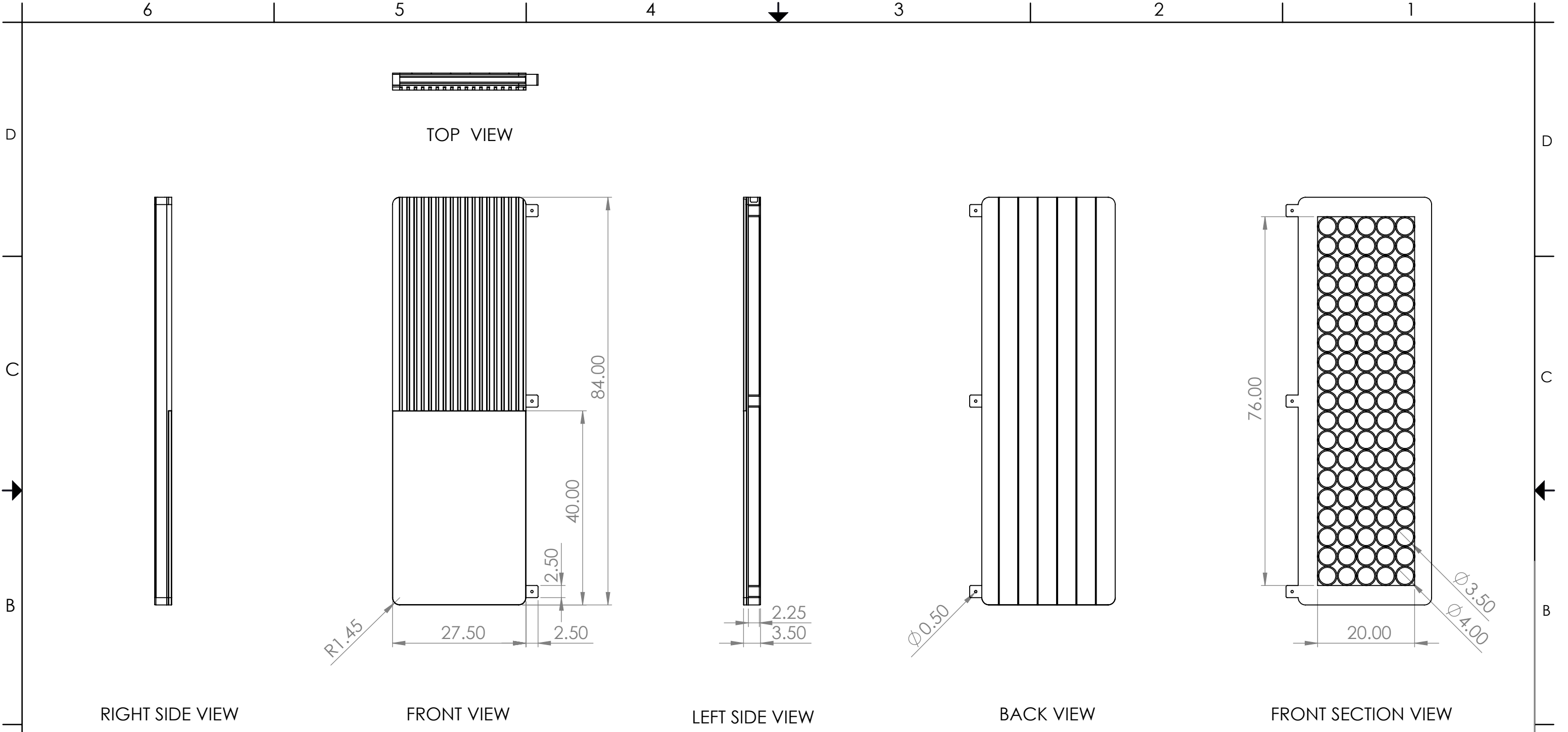


| ITEM NO. | PART NUMBER | DESCRIPTION | QTY. |
|----------|--------------|----------------------|------|
| 1 | Outer Board | Hardwood Laminate | 1 |
| 2 | Panel Frame | Hardwood Plywood | 1 |
| 3 | Panel Core | Corrugated Cardboard | 1 |
| 4 | Slat Board | Hardwood | 1 |
| 5 | Metal Strips | Brushed Steel | 1 |
| 6 | Lower Board | Textured Laminate | 1 |

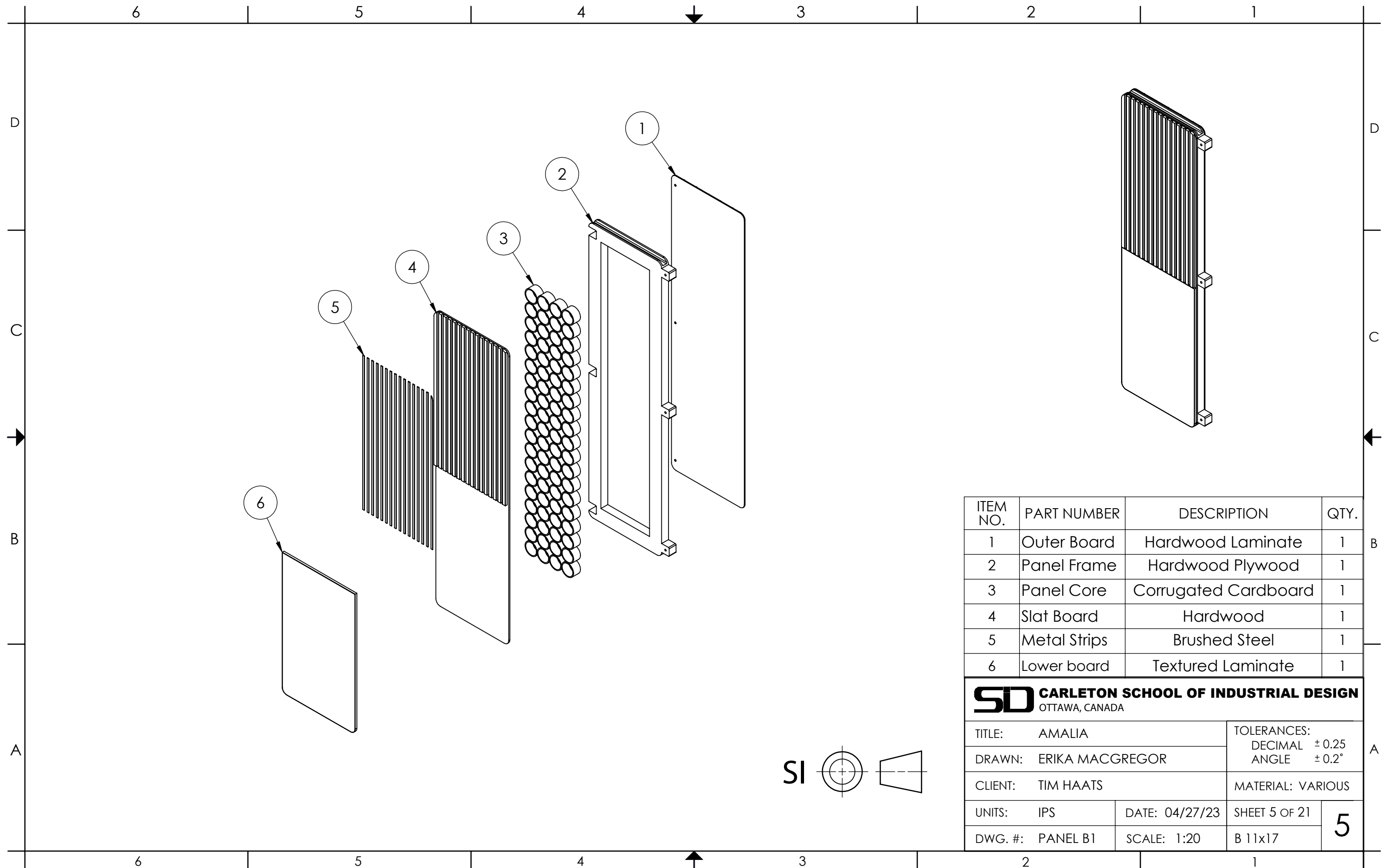
SD CARLETON SCHOOL OF INDUSTRIAL DESIGN
OTTAWA, CANADA

| | | |
|------------------------|---|---------------|
| TITLE: AMALIA | TOLERANCES: DECIMAL ±0.25 ANGLE ±0.2° | |
| DRAWN: ERIKA MACGREGOR | | |
| CLIENT: TIM HAATS | MATERIAL: VARIOUS | |
| UNITS: IPS | DATE: 04/27/23 | SHEET 3 OF 21 |
| DWG. #: PANEL A1 | SCALE: 1:20 | B 11x17 |





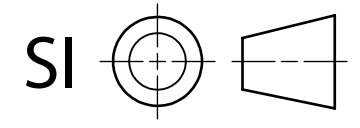
| | | | |
|--|-------------|---|---------------|
| SD CARLETON SCHOOL OF INDUSTRIAL DESIGN OTTAWA, CANADA | | | |
| TITLE: AMALIA | | TOLERANCES: DECIMAL ±0.25 ANGLE ±0.2° | |
| DRAWN: ERIKA MACGREGOR | | MATERIAL: VARIOUS | |
| CLIENT: TIM HAATS | UNITS: IPS | DATE: 04/27/23 | SHEET 4 OF 21 |
| DWG. #: PANEL A2 | SCALE: 1:20 | B 11x17 | 4 |

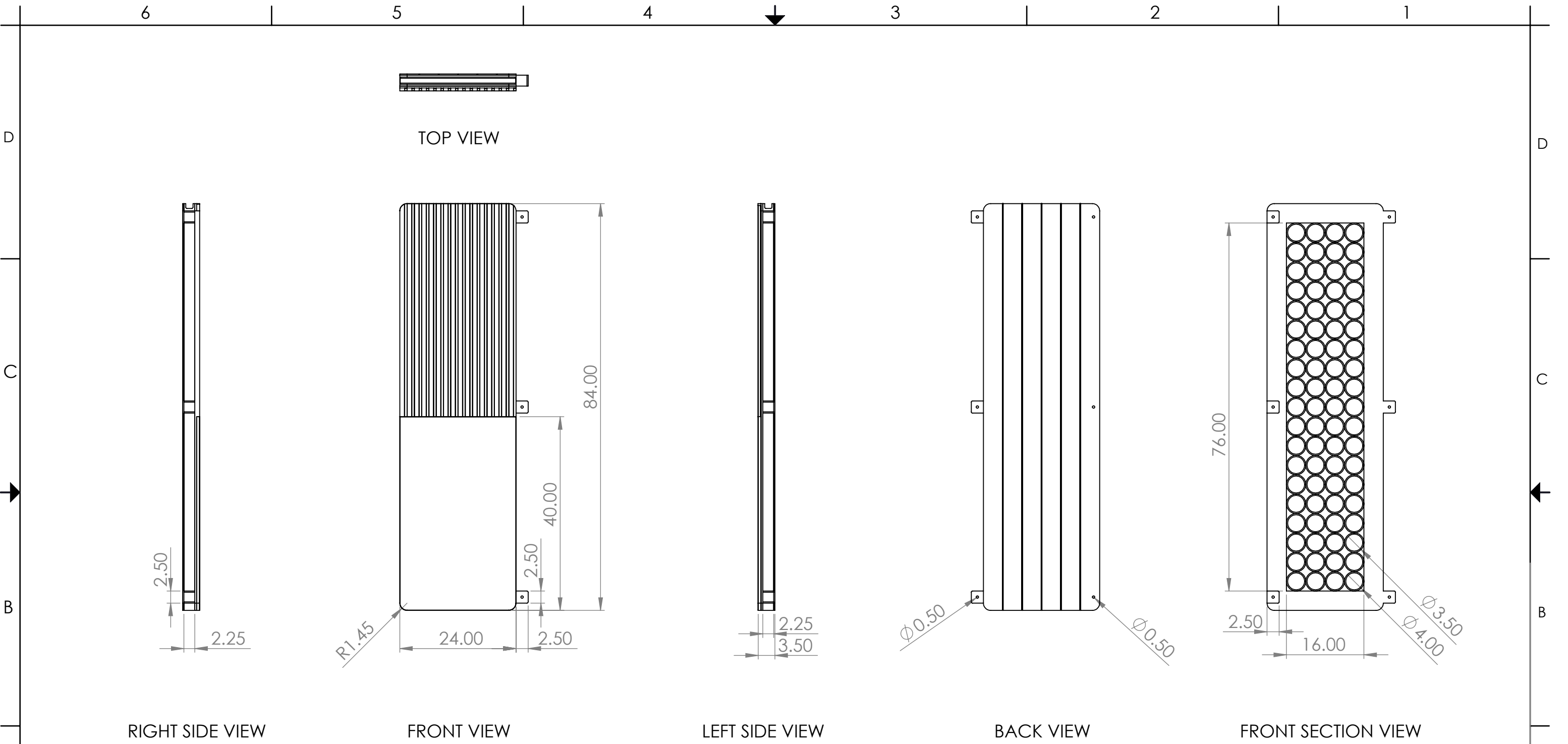


| ITEM NO. | PART NUMBER | DESCRIPTION | QTY. |
|----------|--------------|----------------------|------|
| 1 | Outer Board | Hardwood Laminate | 1 |
| 2 | Panel Frame | Hardwood Plywood | 1 |
| 3 | Panel Core | Corrugated Cardboard | 1 |
| 4 | Slat Board | Hardwood | 1 |
| 5 | Metal Strips | Brushed Steel | 1 |
| 6 | Lower board | Textured Laminate | 1 |

SD CARLETON SCHOOL OF INDUSTRIAL DESIGN
OTTAWA, CANADA

| | | | |
|------------------------|-------------|--|---------------|
| TITLE: AMALIA | | TOLERANCES: DECIMAL ± 0.25 ANGLE $\pm 0.2^\circ$ | |
| DRAWN: ERIKA MACGREGOR | | MATERIAL: VARIOUS | |
| CLIENT: TIM HAATS | UNITS: IPS | DATE: 04/27/23 | SHEET 5 OF 21 |
| DWG. #: PANEL B1 | SCALE: 1:20 | B 11x17 | 5 |





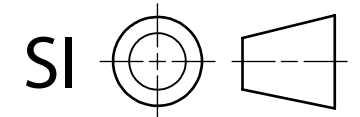
RIGHT SIDE VIEW

FRONT VIEW

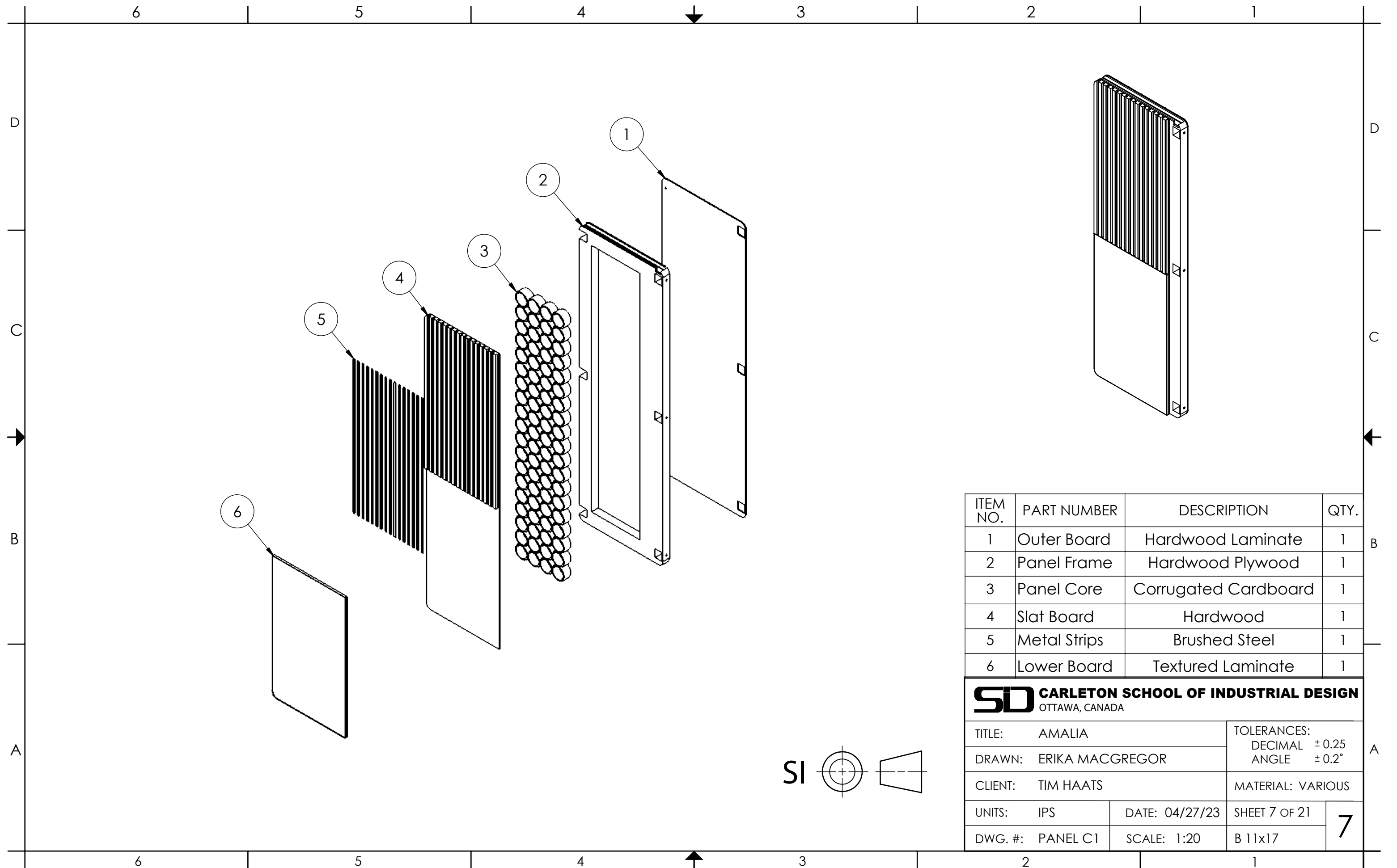
LEFT SIDE VIEW

BACK VIEW

FRONT SECTION VIEW



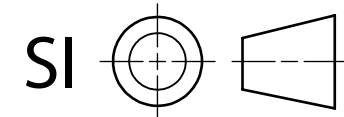
| | | | |
|--|--|---|----------------|
| SD CARLETON SCHOOL OF INDUSTRIAL DESIGN OTTAWA, CANADA | | | |
| TITLE: AMALIA | | TOLERANCES: DECIMAL ±0.25 ANGLE ±0.2° | |
| DRAWN: ERIKA MACGREGOR | | MATERIAL: VARIOUS | |
| CLIENT: TIM HAATS | | UNITS: IPS | DATE: 04/27/23 |
| DWG. #: PANEL B2 | | SCALE: 1:20 | SHEET 6 OF 21 |
| | | | 6 |

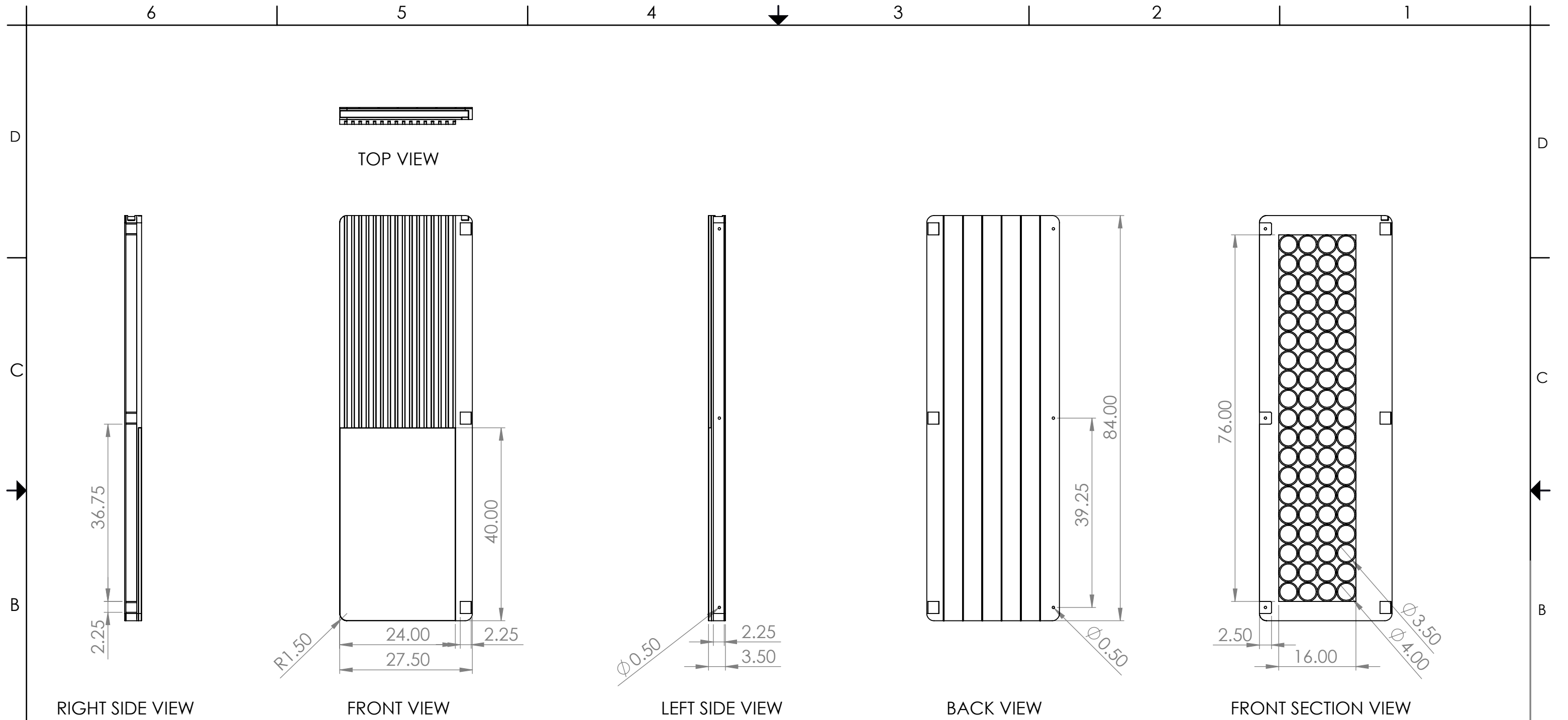


| ITEM NO. | PART NUMBER | DESCRIPTION | QTY. |
|----------|--------------|----------------------|------|
| 1 | Outer Board | Hardwood Laminate | 1 |
| 2 | Panel Frame | Hardwood Plywood | 1 |
| 3 | Panel Core | Corrugated Cardboard | 1 |
| 4 | Slat Board | Hardwood | 1 |
| 5 | Metal Strips | Brushed Steel | 1 |
| 6 | Lower Board | Textured Laminate | 1 |

SD CARLETON SCHOOL OF INDUSTRIAL DESIGN
OTTAWA, CANADA

| | | |
|------------------------|---|---------------|
| TITLE: AMALIA | TOLERANCES: DECIMAL ±0.25 ANGLE ±0.2° | |
| DRAWN: ERIKA MACGREGOR | | |
| CLIENT: TIM HAATS | MATERIAL: VARIOUS | |
| UNITS: IPS | DATE: 04/27/23 | SHEET 7 OF 21 |
| DWG. #: PANEL C1 | SCALE: 1:20 | B 11x17 |





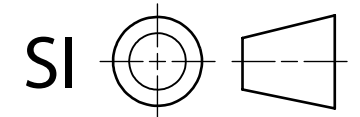
RIGHT SIDE VIEW

FRONT VIEW

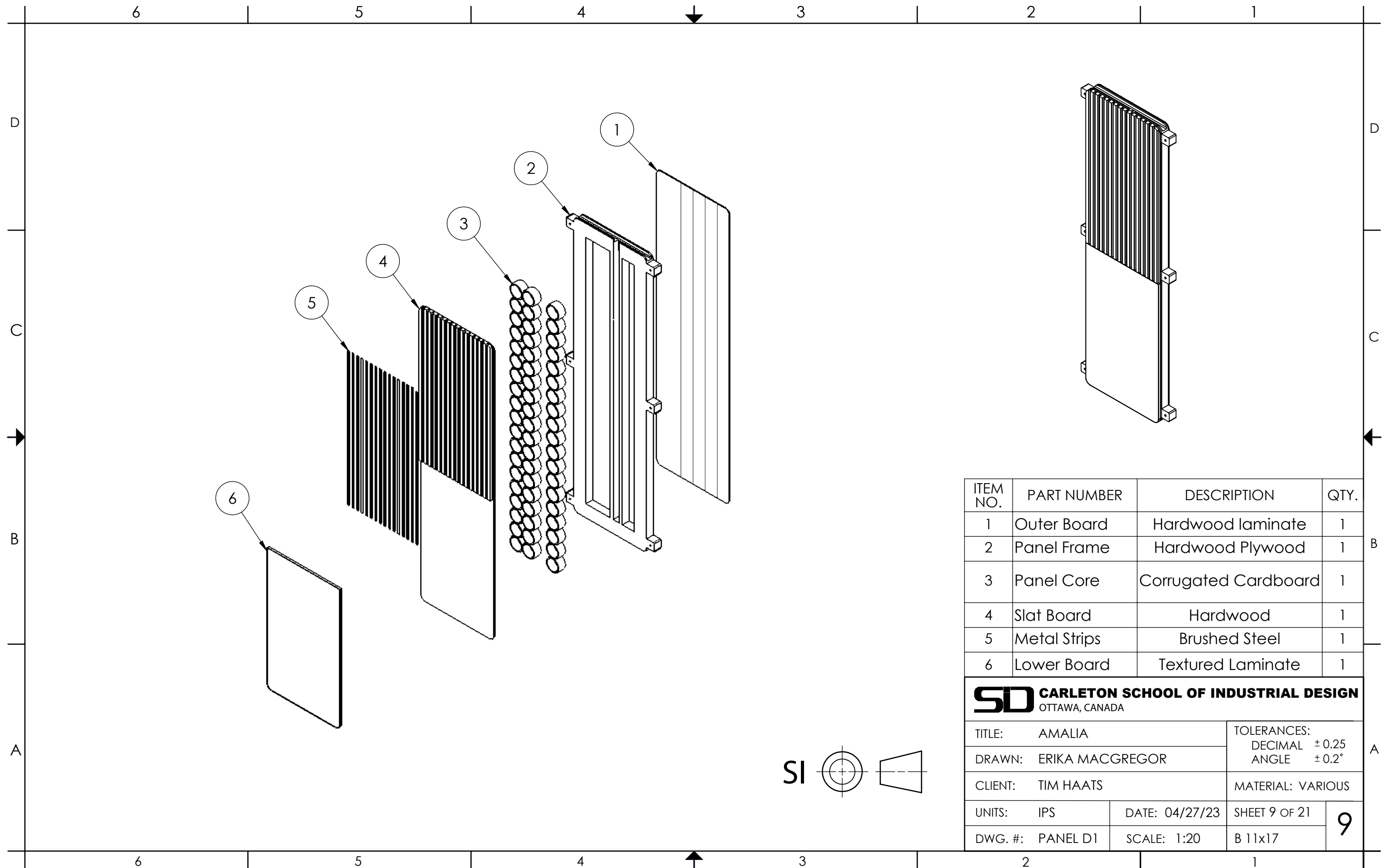
LEFT SIDE VIEW

BACK VIEW

FRONT SECTION VIEW



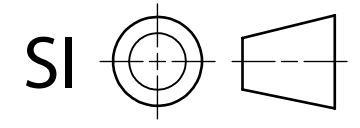
| | | | |
|--|--|--|----------------|
| SD CARLETON SCHOOL OF INDUSTRIAL DESIGN OTTAWA, CANADA | | | |
| TITLE: AMALIA | | TOLERANCES: DECIMAL ± 0.25 ANGLE $\pm 0.2^\circ$ | |
| DRAWN: ERIKA MACGREGOR | | MATERIAL: VARIOUS | |
| CLIENT: TIM HAATS | | UNITS: IPS | DATE: 04/27/23 |
| DWG. #: PANEL C2 | | SCALE: 1:20 | SHEET 8 OF 21 |
| | | | 8 |

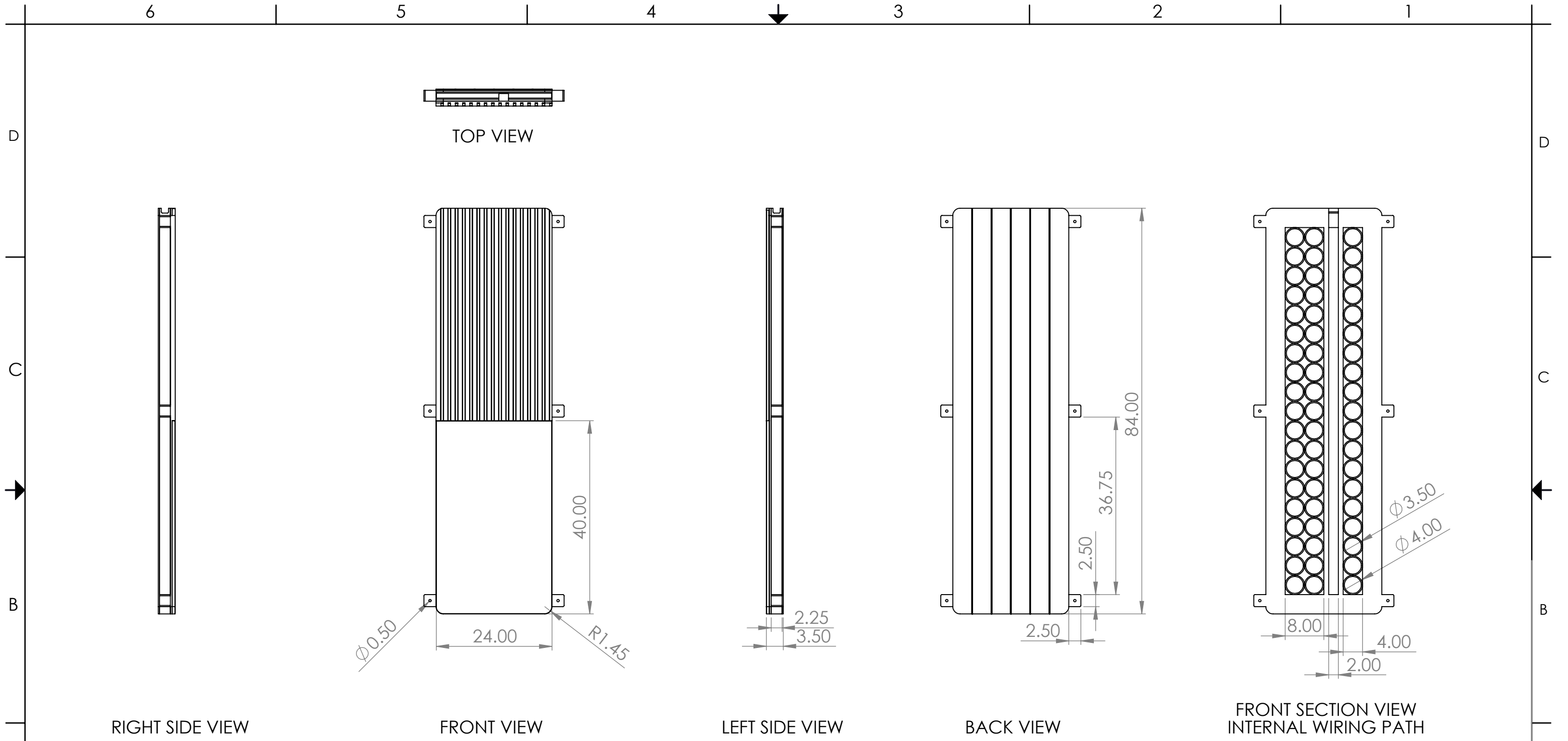


| ITEM NO. | PART NUMBER | DESCRIPTION | QTY. |
|----------|--------------|----------------------|------|
| 1 | Outer Board | Hardwood laminate | 1 |
| 2 | Panel Frame | Hardwood Plywood | 1 |
| 3 | Panel Core | Corrugated Cardboard | 1 |
| 4 | Slat Board | Hardwood | 1 |
| 5 | Metal Strips | Brushed Steel | 1 |
| 6 | Lower Board | Textured Laminate | 1 |

SD CARLETON SCHOOL OF INDUSTRIAL DESIGN
OTTAWA, CANADA

| | | |
|------------------------|---|---------------|
| TITLE: AMALIA | TOLERANCES: DECIMAL ±0.25 ANGLE ±0.2° | |
| DRAWN: ERIKA MACGREGOR | | |
| CLIENT: TIM HAATS | MATERIAL: VARIOUS | |
| UNITS: IPS | DATE: 04/27/23 | SHEET 9 OF 21 |
| DWG. #: PANEL D1 | SCALE: 1:20 | B 11x17 |





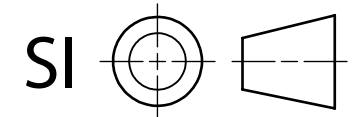
RIGHT SIDE VIEW

FRONT VIEW

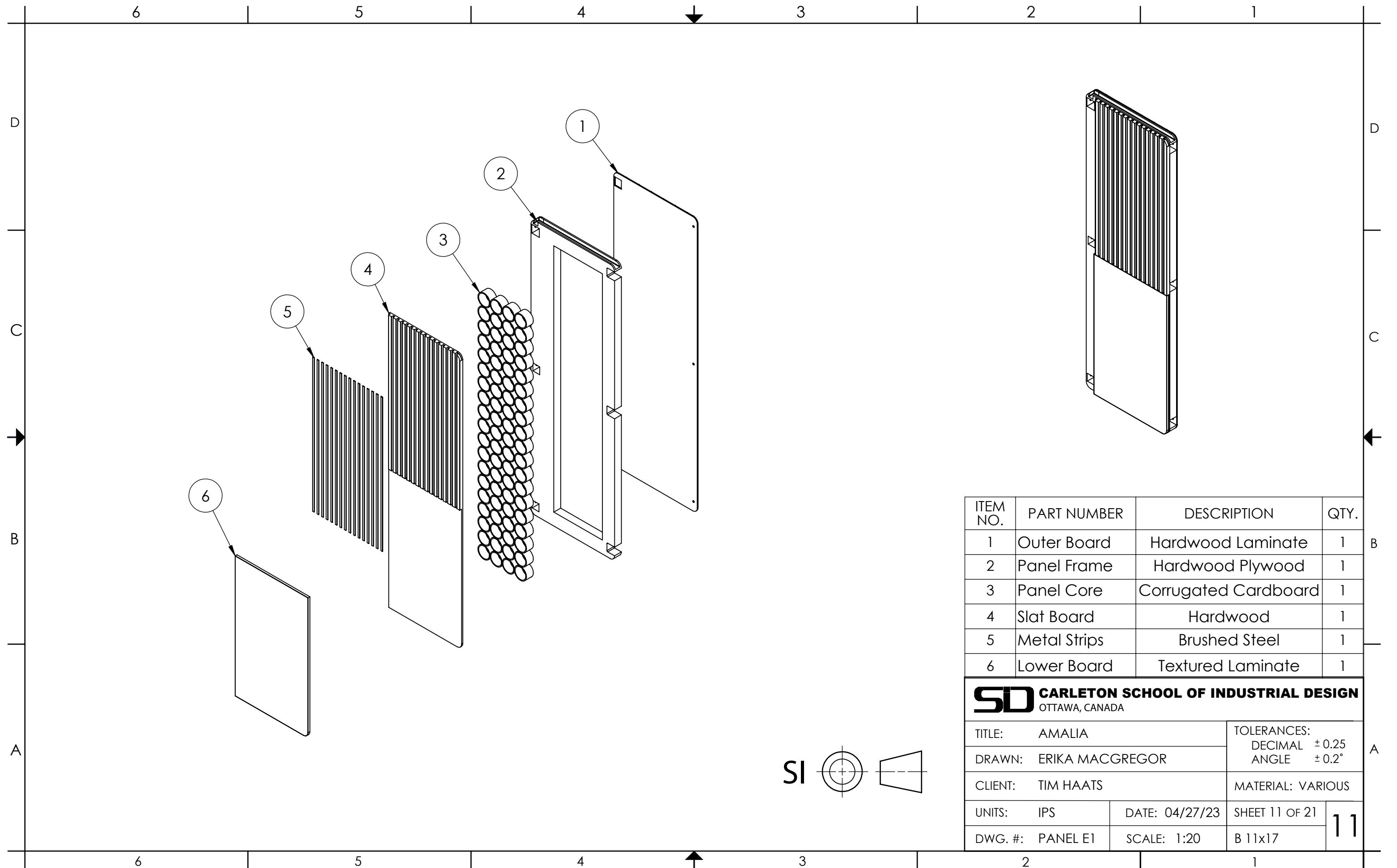
LEFT SIDE VIEW

BACK VIEW

FRONT SECTION VIEW
INTERNAL WIRING PATH



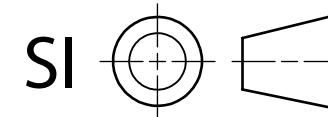
| | | | |
|--|-------------|--|----------------|
| SD CARLETON SCHOOL OF INDUSTRIAL DESIGN OTTAWA, CANADA | | | |
| TITLE: AMALIA | | TOLERANCES: DECIMAL ± 0.25 ANGLE $\pm 0.2^\circ$ | |
| DRAWN: ERIKA MACGREGOR | | MATERIAL: VARIOUS | |
| CLIENT: TIM HAATS | | DATE: 04/27/23 | SHEET 10 OF 21 |
| UNITS: IPS | SCALE: 1:20 | B 11x17 | 10 |
| DWG. #: PANEL D2 | | | |

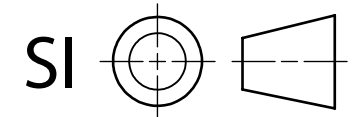
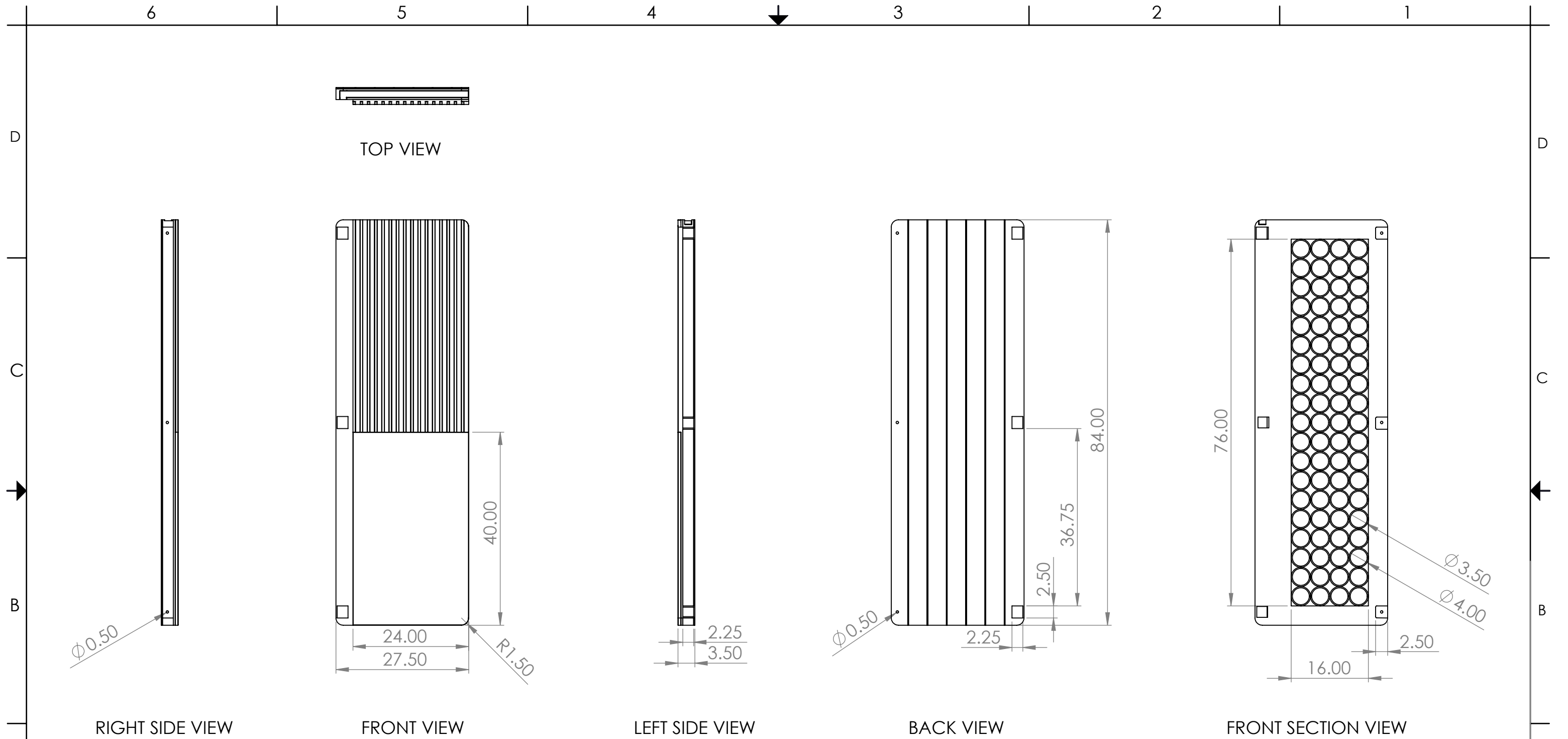


| ITEM NO. | PART NUMBER | DESCRIPTION | QTY. |
|----------|--------------|----------------------|------|
| 1 | Outer Board | Hardwood Laminate | 1 |
| 2 | Panel Frame | Hardwood Plywood | 1 |
| 3 | Panel Core | Corrugated Cardboard | 1 |
| 4 | Slat Board | Hardwood | 1 |
| 5 | Metal Strips | Brushed Steel | 1 |
| 6 | Lower Board | Textured Laminate | 1 |

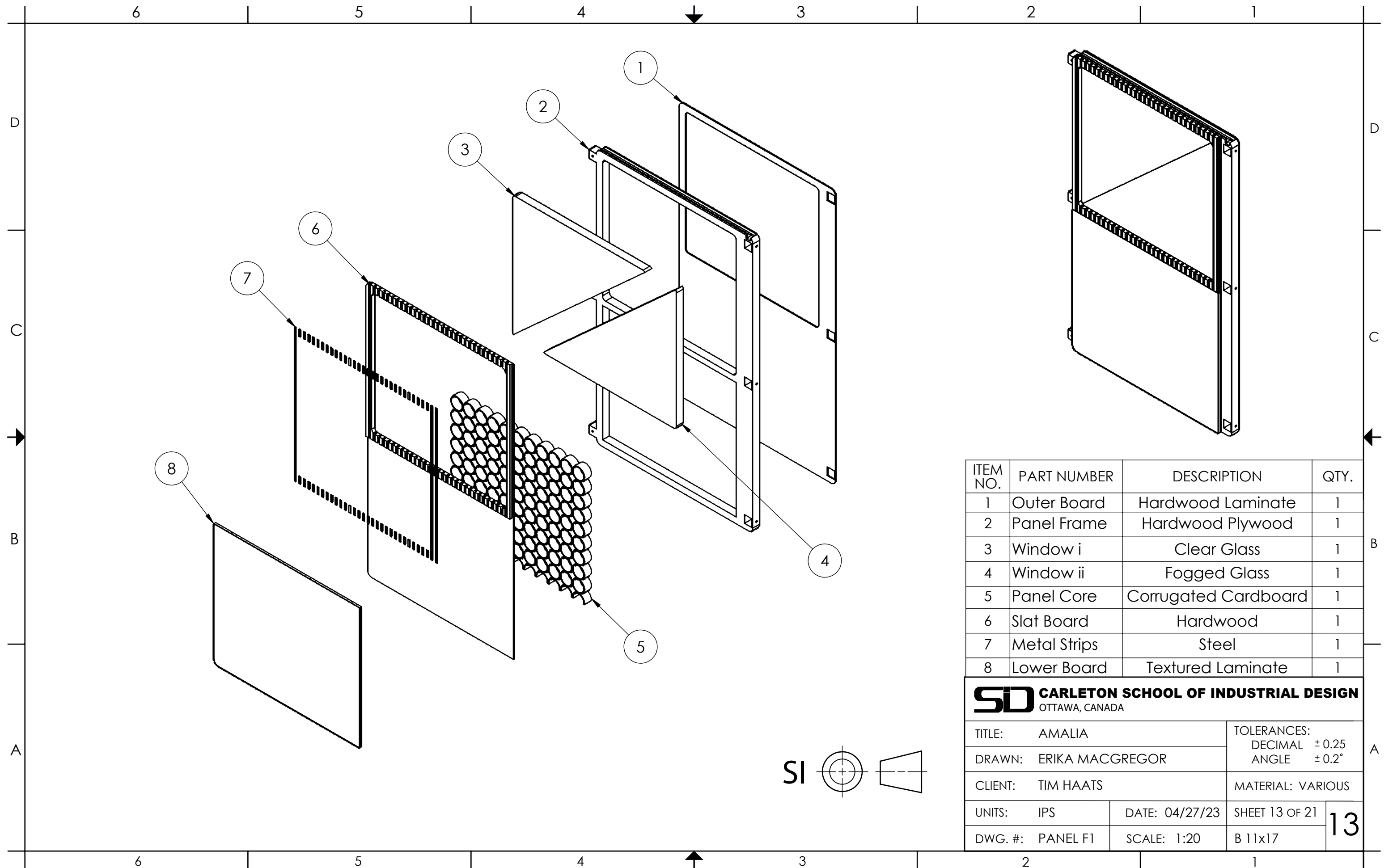
SD CARLETON SCHOOL OF INDUSTRIAL DESIGN
OTTAWA, CANADA

| | | |
|------------------------|---|----------------|
| TITLE: AMALIA | TOLERANCES: DECIMAL ±0.25 ANGLE ±0.2° | |
| DRAWN: ERIKA MACGREGOR | | |
| CLIENT: TIM HAATS | MATERIAL: VARIOUS | |
| UNITS: IPS | DATE: 04/27/23 | SHEET 11 OF 21 |
| DWG. #: PANEL E1 | SCALE: 1:20 | B 11x17 |





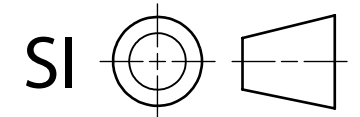
| | | | |
|--|--|--|----------------|
| SD CARLETON SCHOOL OF INDUSTRIAL DESIGN OTTAWA, CANADA | | | |
| TITLE: AMALIA | | TOLERANCES: DECIMAL ± 0.25 ANGLE $\pm 0.2^\circ$ | |
| DRAWN: ERIKA MACGREGOR | | MATERIAL: VARIOUS | |
| CLIENT: TIM HAATS | | UNITS: IPS | DATE: 04/27/23 |
| DWG. #: PANEL E2 | | SCALE: 1:20 | SHEET 12 OF 21 |
| | | | 12 |

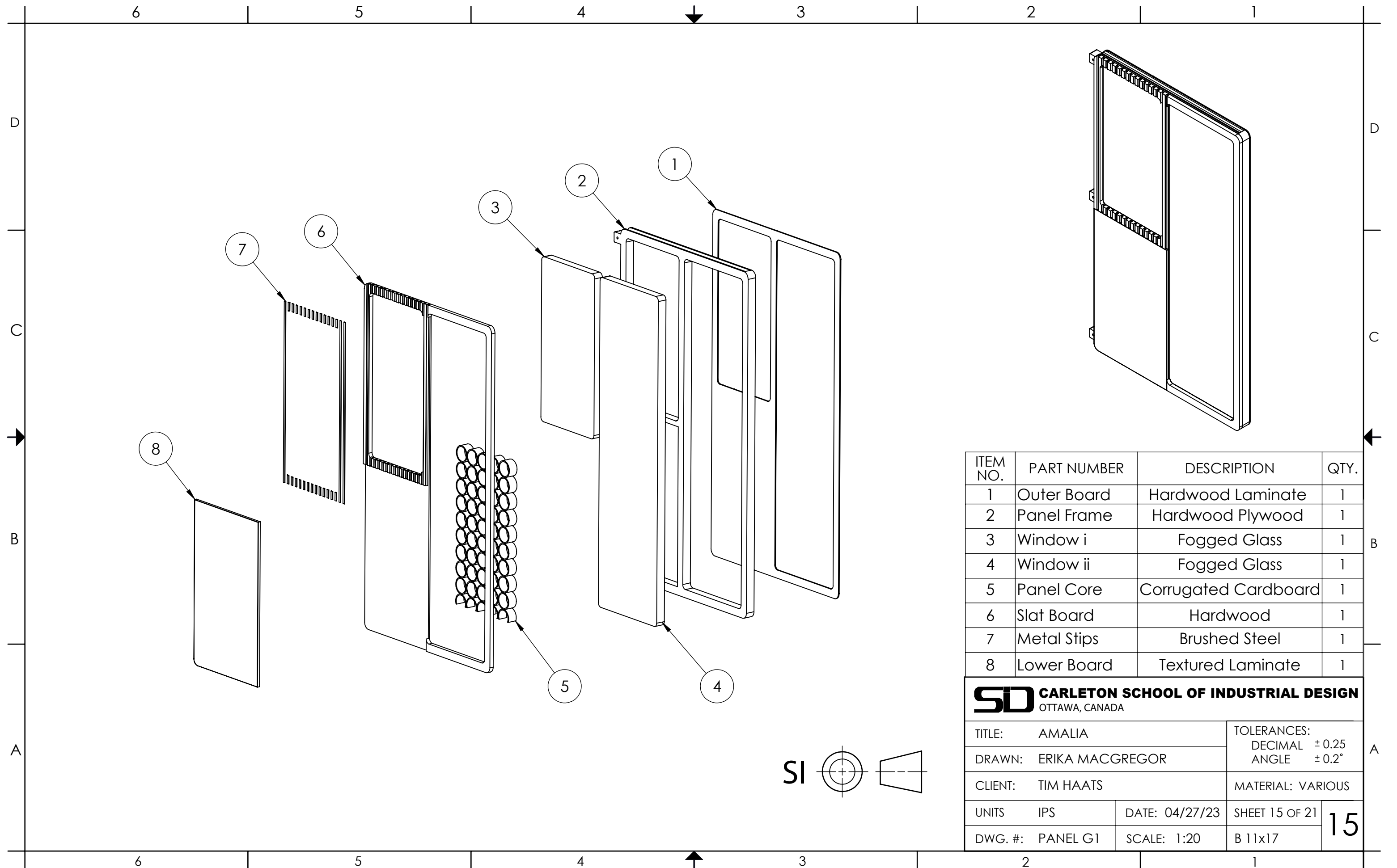


| ITEM NO. | PART NUMBER | DESCRIPTION | QTY. |
|----------|--------------|----------------------|------|
| 1 | Outer Board | Hardwood Laminate | 1 |
| 2 | Panel Frame | Hardwood Plywood | 1 |
| 3 | Window i | Clear Glass | 1 |
| 4 | Window ii | Fogged Glass | 1 |
| 5 | Panel Core | Corrugated Cardboard | 1 |
| 6 | Slat Board | Hardwood | 1 |
| 7 | Metal Strips | Steel | 1 |
| 8 | Lower Board | Textured Laminate | 1 |

SD CARLETON SCHOOL OF INDUSTRIAL DESIGN
OTTAWA, CANADA

| | |
|------------------------|---|
| TITLE: AMALIA | TOLERANCES: DECIMAL ±0.25 ANGLE ±0.2° |
| DRAWN: ERIKA MACGREGOR | MATERIAL: VARIOUS |
| CLIENT: TIM HAATS | DATE: 04/27/23 |
| UNITS: IPS | SHEET 13 OF 21 |
| DWG. #: PANEL F1 | SCALE: 1:20 |

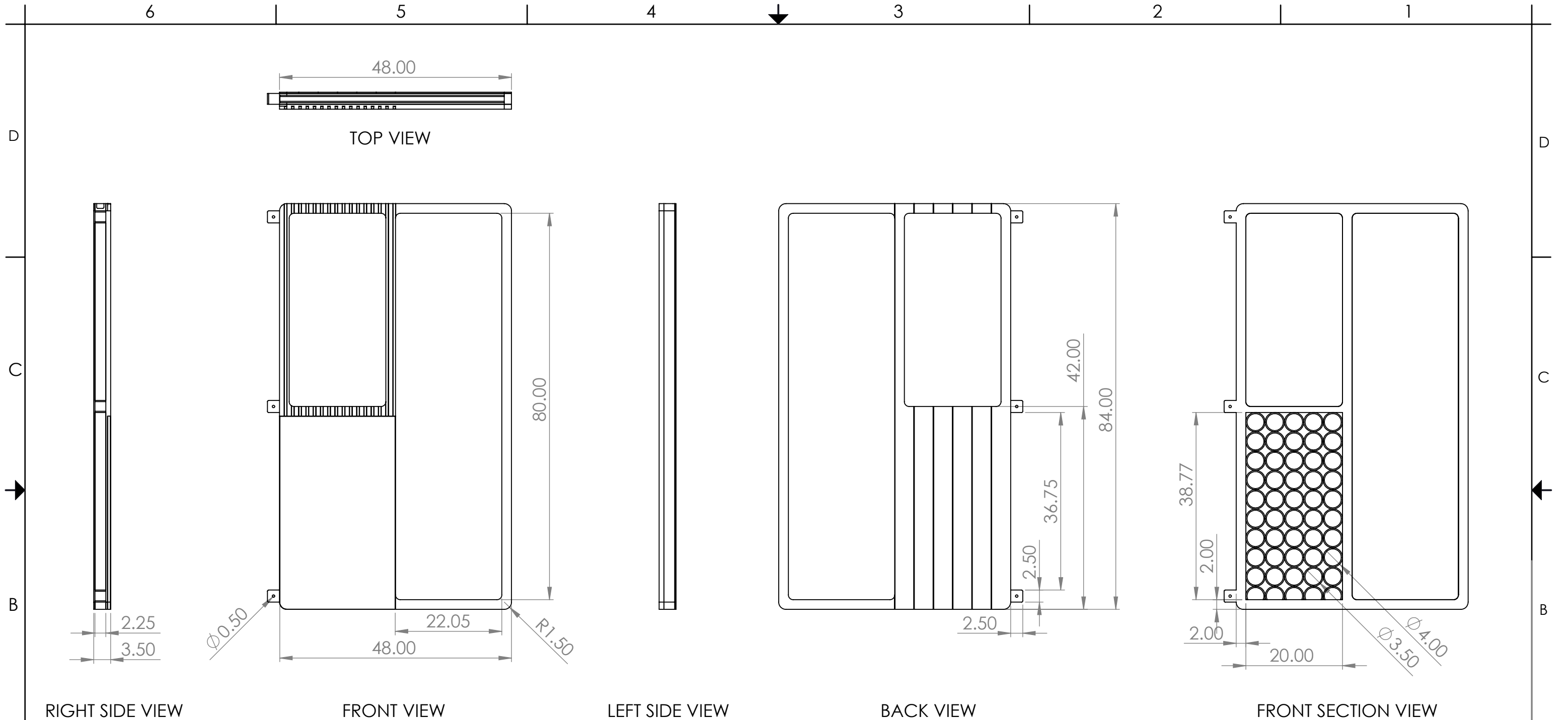




| ITEM NO. | PART NUMBER | DESCRIPTION | QTY. |
|----------|-------------|----------------------|------|
| 1 | Outer Board | Hardwood Laminate | 1 |
| 2 | Panel Frame | Hardwood Plywood | 1 |
| 3 | Window i | Fogged Glass | 1 |
| 4 | Window ii | Fogged Glass | 1 |
| 5 | Panel Core | Corrugated Cardboard | 1 |
| 6 | Slat Board | Hardwood | 1 |
| 7 | Metal Stips | Brushed Steel | 1 |
| 8 | Lower Board | Textured Laminate | 1 |

SD CARLETON SCHOOL OF INDUSTRIAL DESIGN
OTTAWA, CANADA

| | | |
|------------------------|---|----------------|
| TITLE: AMALIA | TOLERANCES: DECIMAL ±0.25 ANGLE ±0.2° | |
| DRAWN: ERIKA MACGREGOR | MATERIAL: VARIOUS | |
| CLIENT: TIM HAATS | DATE: 04/27/23 | SHEET 15 OF 21 |
| UNITS: IPS | SCALE: 1:20 | 15 |
| DWG. #: PANEL G1 | B 11x17 | |



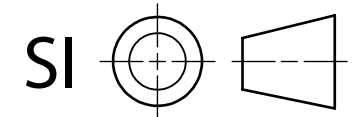
RIGHT SIDE VIEW

FRONT VIEW

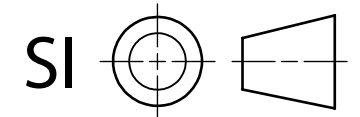
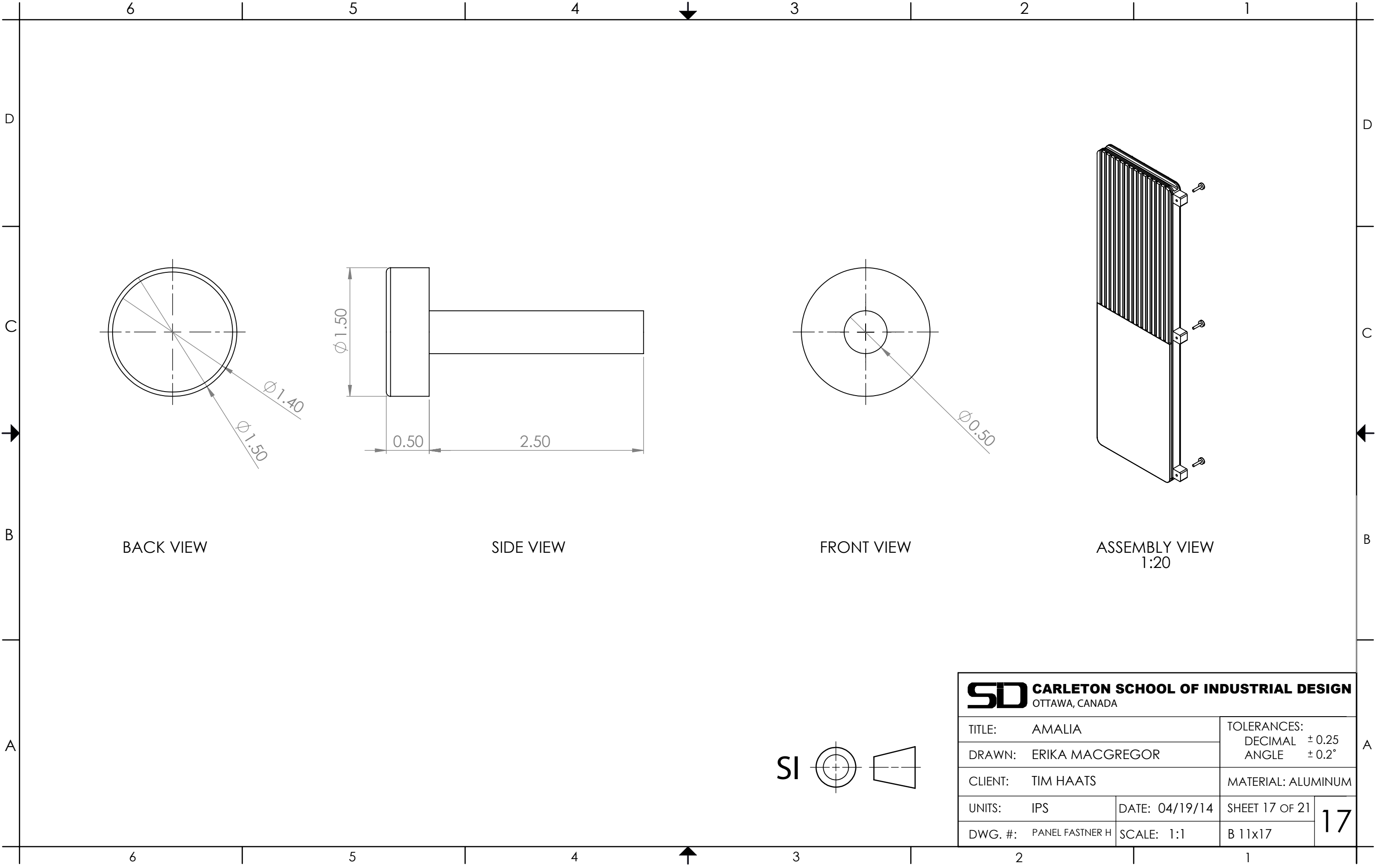
LEFT SIDE VIEW

BACK VIEW

FRONT SECTION VIEW



| | | | |
|--|-------------|--|----------------|
| SD CARLETON SCHOOL OF INDUSTRIAL DESIGN OTTAWA, CANADA | | | |
| TITLE: AMALIA | | TOLERANCES: DECIMAL ± 0.25 ANGLE $\pm 0.2^\circ$ | |
| DRAWN: ERIKA MACGREGOR | | MATERIAL: VARIOUS | |
| CLIENT: TIM HAATS | | DATE: 04/27/23 | SHEET 16 OF 21 |
| UNITS: IPS | SCALE: 1:20 | B 11x17 | 16 |
| DWG. #: PANEL G2 | | | |



| | | | |
|--|-------------------------|--|----------------|
| SD CARLETON SCHOOL OF INDUSTRIAL DESIGN OTTAWA, CANADA | | | |
| TITLE: AMALIA | | TOLERANCES: DECIMAL ± 0.25 ANGLE $\pm 0.2^\circ$ | |
| DRAWN: ERIKA MACGREGOR | | MATERIAL: ALUMINUM | |
| CLIENT: TIM HAATS | | DATE: 04/19/14 | SHEET 17 OF 21 |
| UNITS: IPS | DWG. #: PANEL FASTNER H | SCALE: 1:1 | B 11x17 |

17

6

5

4

3

2

1

D

D

C

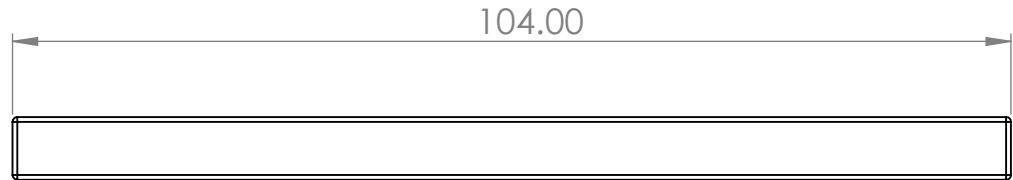
C

B

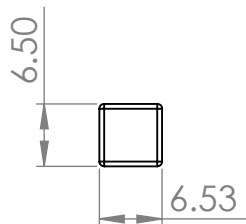
B

A

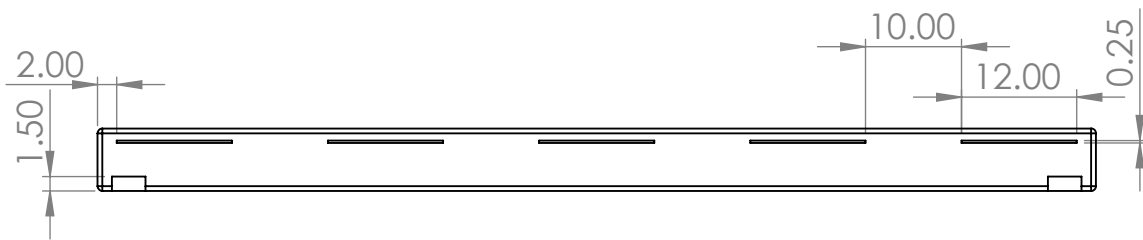
A



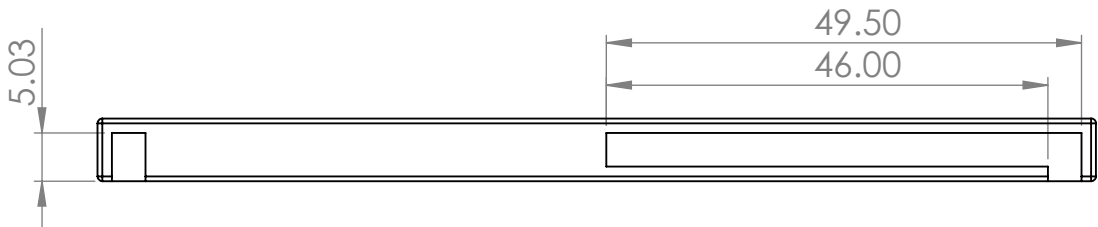
TOP VIEW



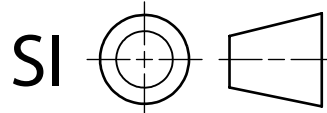
SIDE VIEW



FRONT VIEW



BOTTOM VIEW



SD CARLETON SCHOOL OF INDUSTRIAL DESIGN
OTTAWA, CANADA

| | | | |
|------------------------|--|---|----------------|
| TITLE: AMALIA | | TOLERANCES: DECIMAL ± 0.25 ANGLE ± 0.2° | |
| DRAWN: ERIKA MACGREGOR | | MATERIAL: HARDWOOD | |
| CLIENT: TIM HAATS | | UNITS: IPS | DATE: 04/27/23 |
| DWG. #: ROOF BEAM I | | SCALE: 1:20 | SHEET 18 OF 21 |

18

6

5

4

3

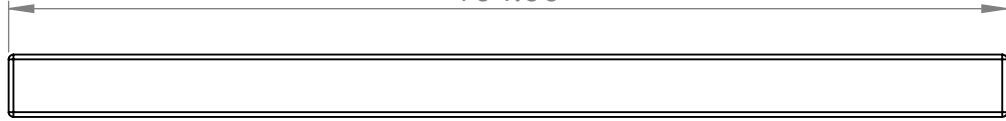
2

1

D

D

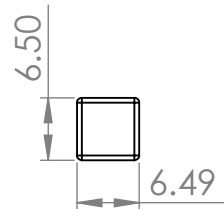
104.00



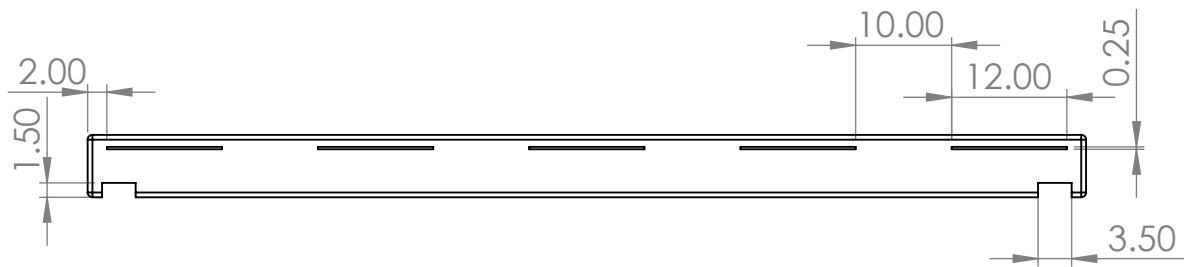
TOP VIEW

C

C



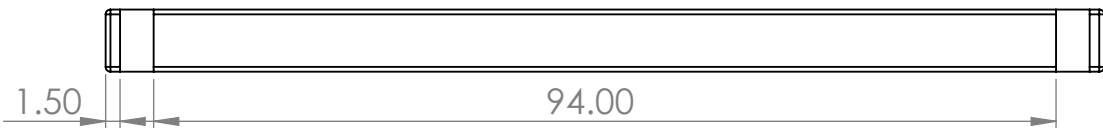
SIDE VIEW



FRONT VIEW

B

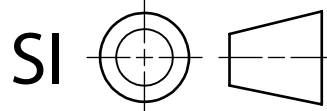
B



BOTTOM VIEW

A

A



SD CARLETON SCHOOL OF INDUSTRIAL DESIGN
OTTAWA, CANADA

TITLE: AMALIA

TOLERANCES:
DECIMAL ±0.25
ANGLE ±0.2°

DRAWN: ERIKA MACGREGOR

CLIENT: TIM HAATS

MATERIAL: HARDWOOD

UNITS: IPS

DATE: 04/27/23

SHEET 19 OF 21

DWG. #: ROOF BEAM J

SCALE: 1:20

B 11x17

19

6

5

4

3

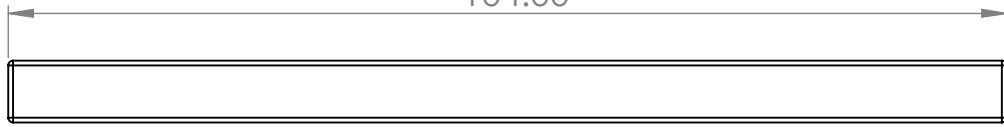
2

1

D

D

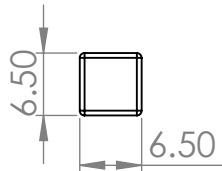
104.00



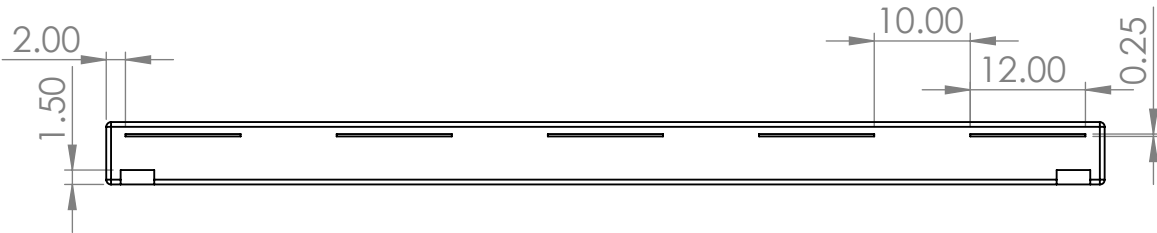
TOP VIEW

C

C



SIDE VIEW

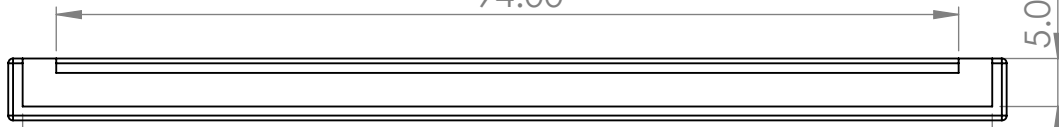


FRONT VIEW

B

B

94.00

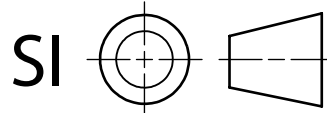


BOTTOM VIEW

101.00

A

A



SD CARLETON SCHOOL OF INDUSTRIAL DESIGN
OTTAWA, CANADA

TITLE: AMALIA

TOLERANCES:
DECIMAL ±0.25
ANGLE ±0.2°

DRAWN: ERIKA MACGREGOR

CLIENT: TIM HAATS

MATERIAL: HARDWOOD

UNITS: IPS

DATE: 04/27/23

SHEET 20 OF 21

DWG. #: ROOF BEAM K

SCALE: 1:20

B 11x17

20

6

5

4

3

2

1

D

D

125.00

12.00

C

C

TOP VIEW

B

B

0.25

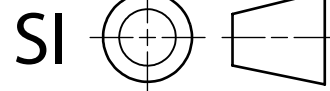
B

B

SIDE VIEW

A

A



| | | | |
|--|--|---|----------------|
| SD CARLETON SCHOOL OF INDUSTRIAL DESIGN OTTAWA, CANADA | | | |
| TITLE: AMALIA | | TOLERANCES: DECIMAL ±0.25 ANGLE ±0.2° | |
| DRAWN: ERIKA MACGREGOR | | MATERIAL: LINEN | |
| CLIENT: TIM HAATS | | UNITS: IPS | DATE: 04/27/23 |
| DWG. #: ROOF FABRICK L | | SCALE: 1:10 | SHEET 21 OF 21 |
| | | | 21 |